



STAINLESS STEEL & FUSED METAL® ELEVATOR DOOR SKINS

PRODUCT DATA



FORMS+SURFACES®



STAINLESS STEEL & FUSED METAL® ELEVATOR DOOR SKINS

PRODUCT DATA

Stainless Steel & Fused Metal Elevator Door Skins are the perfect way to carry a design theme across an installation, from cab interior to cab exterior and beyond. Included within this group are door skins for elevator car doors and hoistway doors. Both draw on our extensive palette of options and may be specified in a wide range of materials and finishes selected to provide maximum design versatility while meeting the aesthetic and performance needs of any environment.

Stainless Steel & Fused Metal Elevator Door Skins are available for both elevator car doors and hoistway doors. Elevator car doors are an integral part of the cab itself and move along with it. Hoistway doors are the exterior doors located between an elevator shaft or hoistway and the floor landing. They are only visible from outside the elevator cab on each floor. When the cab reaches its destination, both the elevator car door and the hoistway doors open simultaneously.

MATERIAL DESCRIPTION

MATERIALS	FINISHES	PATTERNS
<p>Stainless Steel - our flagship material. The strength, beauty, versatility and maintenance ease of stainless steel make it the ideal elevator door skin material for just about any application or architectural design.</p> <p>Fused Metal® - our exclusive line of colored stainless steel is produced in an advanced manufacturing process and offers the durability and low maintenance of stainless steel with a range of color options that includes Fused Bronze, Fused Graphite, Fused Nickel Bronze, Fused Nickel Silver and Fused White Gold.</p>	Stainless Steel & Fused Metal Elevator Door Skins may be specified in a rich variety of distinctive finishes. High-durability options—such as our exclusive Sandstone, Seastone, Silk and Linen finishes—create a work-hardened surface that provides even greater resistance to abrasion and wear.	Patterns are applied designs that add visual interest and expanded customization potential to elevator door skins. From a functional standpoint, patterns pick up where metals and finishes leave off. Depending on the design and application, patterns can be applied as single-tool embossures, full-sheet pressings or as etched designs using our environmentally responsible Eco-Etch physical etching process.

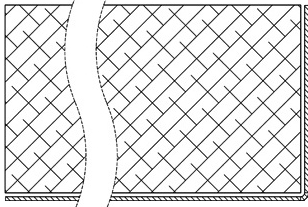
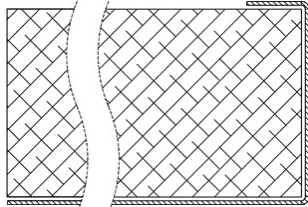
DOOR SKIN SIZES

Elevator Door Skins are available for the standard overall clear openings sizes shown below:

SIZE OPTIONS		MATERIAL THICKNESS
3'0" x 7'0"	3'0" x 8'0"	Stainless Steel and Fused Metal door skins have an overall thickness of .125" or less. Stainless Steel and Fused Metal materials start with a base sheet thickness of .8mm (.032"). Impression patterns increase the thickness up to the maximum .125". It is the specifier's responsibility to determine if the desired material and pattern combination is suitable for a particular application in terms of both clearance and local code compliance.
3'6" x 7'0"	3'6" x 8'0"	
4'0" x 7'0"	4'0" x 8'0"	
<ul style="list-style-type: none">Custom sizes are available by special order. For some configurations, pattern placement and layout restrictions may apply. Please call to confirm available sizes for your particular configuration.Single-speed side-opening doors are limited to a maximum door skin sheet width of 48" including returns.		

EDGES AND RETURNS

Stainless Steel & Fused Metal Elevator Door Skins are designed to serve as both door face and edge detail. Metal faces can be specified with an "L" shaped return or with a "J" shape that returns around the back side of the door. Please call to discuss design and dimensional considerations for door edges and returns.

"L" SHAPED RETURN	"J" SHAPED RETURN
	



STAINLESS STEEL & FUSED METAL® ELEVATOR DOOR SKINS

PRODUCT DATA

INSTALLATION

Standard contact adhesive should be used for non-relief materials, while epoxy resin should be considered for high-relief patterned skins. All laminating should be performed using appropriate pressure and time considerations. Forms+Surfaces assumes no responsibility or liability for the efficacy of any third party's laminating procedures. Forms+Surfaces recommends the use of contact adhesives and epoxy resins that meet or exceed the following general performance criteria:

	T-PEEL STRENGTH	SHEAR STRENGTH
CONTACT ADHESIVE	20-25 pli	1100 psi
EPOXY RESIN	20-25 pli	2750 psi

Note: Data assumes a seven-day cure at 75° F.

MAINTENANCE & FIRE RATING

MAINTENANCE	FIRE RATING
Fingerprints and smudges can be removed using a non-chlorinated spray cleaner/degreaser such as Simple Green® and a microfiber cloth. Do not use harsh abrasives, acids or chlorine-based cleaners or cleaning tools containing carbon steel, such as steel wool or wire brushes.	Stainless Steel and Fused Metal are NFPA and IBC class A fire rated and UBC class 1 fire rated.

RELATED PRODUCTS

ELEVATOR SURROUNDS	ELEVATOR INTERIORS	BONDED METAL ELEVATOR DOOR SKINS	ARCHITECTURAL ACCENTS
Elevator surrounds and frames are available in a variety of materials and finishes to coordinate with your elevator door skins. Please give us a call for details on how to specify elevator surrounds.	Our LEVELc and LEVELe® Elevator Interiors are a cost effective alternative to custom cabs. Ideal for new equipment or modernization projects, each cab interior package includes everything needed for quick and cost-efficient installation: wall panels, handrails, trim pieces, light fixtures and ceiling.	Elevator car and hoistway door skins are also available in Forms+Surfaces' exclusive Bonded Metal. Bonded Metal is the product of a unique technology that casts metal granules in a tough, FRP matrix. The result is lightweight but extremely durable castings with the character and appearance of solid metal.	Stainless Steel & Fused Metal sheet goods to match or complement your elevator door skins and elevator interiors are also available for frames, headers, jambs, returns, lobby walls and other areas.



STAINLESS STEEL & FUSED METAL® ELEVATOR DOOR SKINS

PRODUCT DATA

IMPRESSION ELEVATOR DOOR SKINS

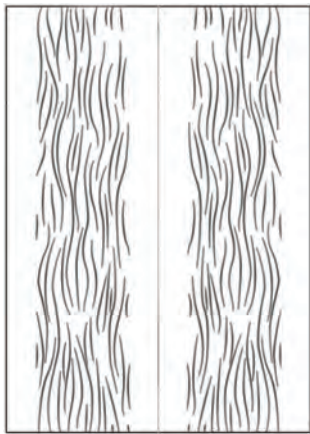
Our manufacturing capabilities include large-scale stamping equipment that can apply unique, full-press patterns across an entire elevator door face using a single tool. The result is a series of beautiful, high-relief door designs that add visual impact to the settings in which they're installed.

For expanded design reach, some of our full-press patterns are also produced in Bonded Metal, a versatile composite exclusive to F+S. Some can likewise be specified for other products that use our Stainless Steel and Fused Metal, including doors, elevator interiors, wall panels and column covers.

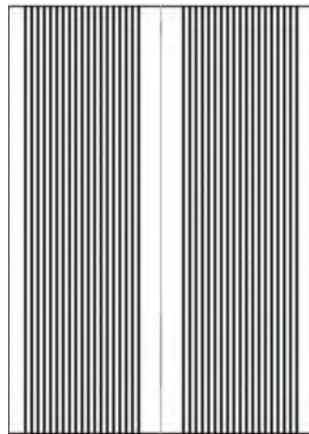
Impression patterns made up of embossed geometric shapes are also an option for elevator door skins. Four standard shapes – Circle, Square, Teardrop and Tech – can be specified in the patterns shown below, or they can be used to create custom pattern variations.

All Impression patterns add dimensional enhancement, a tactile feel, and can help conceal surface blemishes routinely acquired in daily use.

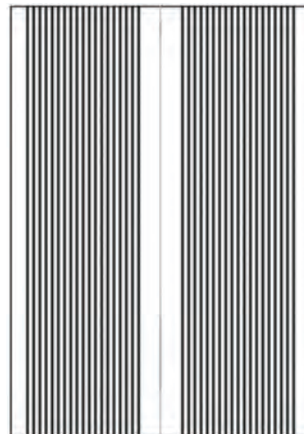
IMPRESSION PATTERNS



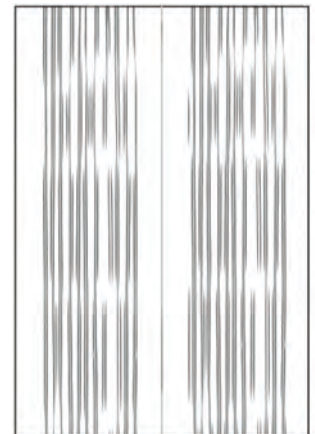
CHAMPAGNE
PRE101H



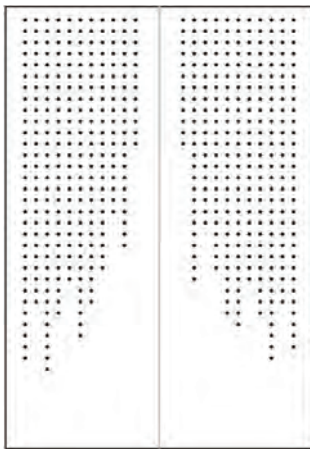
DALLAS
PRE102H



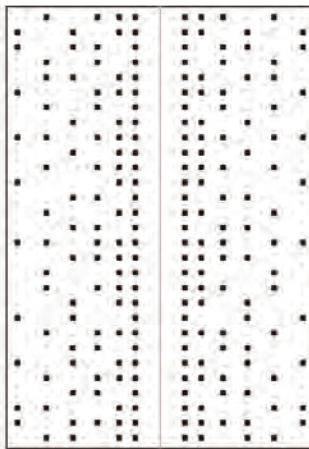
DENVER
PRE106H



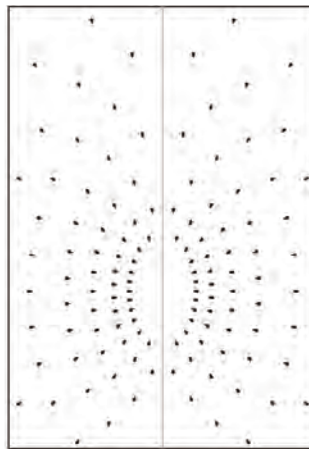
KALAHARI
PRE103H



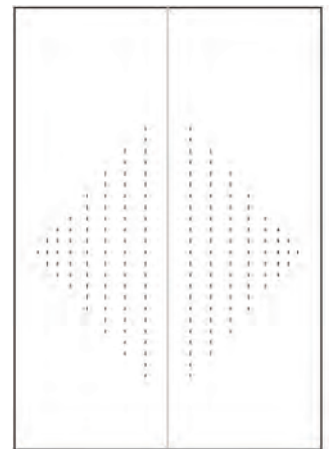
CIRCLE EMBOSSURES
EMB401H



SQUARE EMBOSSURES
EMB402H



TEARDROP EMBOSSURES
EMB403H



TECH EMBOSSURES
EMB404H



STAINLESS STEEL & FUSED METAL® ELEVATOR DOOR SKINS

PRODUCT DATA

ECO-ETCH® ELEVATOR DOOR SKINS

Beautiful etched designs are applied to Stainless Steel & Fused Metal Elevator Door Skins using our advanced photolithographic bead-blasting system instead of acids or other harmful chemicals. Advantages of our Eco-Etch process include:

SIZE	SPEED	CONSISTENCY	ECOLOGICALLY RESPONSIBLE
The largest physical etching system in North America, our equipment can handle materials up to two meters wide by six meters long.	The physical etching process can be completed in a fraction of the time required for traditional chemical etching.	Our proprietary computer-controlled system ensures an even blast pressure and a consistent finish, even on the largest surfaces.	Because our Eco-Etch is physically applied, it does not require etching acid or other harmful chemicals and no toxic waste is generated. The beads used in the process are contained within a closed chamber; used beads are recycled and returned to the process for reuse.

All standard and custom Eco-Etch patterns are available in Stainless Steel, Fused Bronze, Fused Graphite, Fused Nickel Silver and Fused White Gold with Seastone, Satin or Mirror finish.

STANDARD PATTERNS

Several standard full door and allover Eco-Etch patterns are available for specification. Please see the Stainless Steel and Fused Metal Product Data Sheets for more detailed information. Full door patterns are shown below at an overall size of 4' x 10'; some pattern cropping may occur due to the actual size of specified doors.

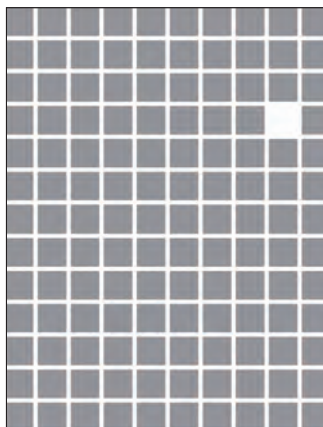
FULL DOOR ECO-ETCH PATTERNS



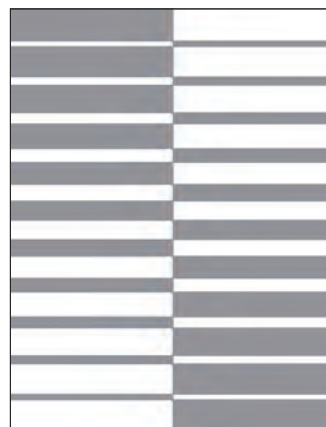
EC0202H



EC0205H



EC0204H



EC0208H



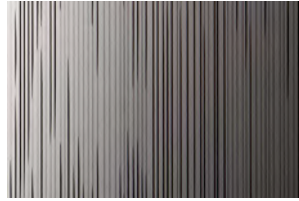
STAINLESS STEEL & FUSED METAL® ELEVATOR DOOR SKINS

PRODUCT DATA

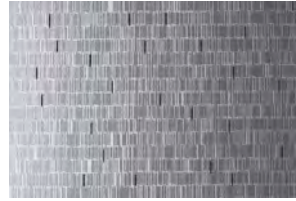
ALLOVER ECO-ETCH PATTERNS



CITY LIGHTS



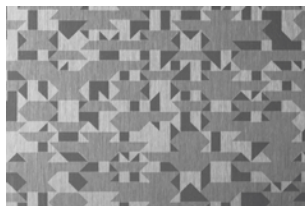
CURRENT



DASH



FLICKER



GLACIER



MICA



REEDS



SEAGRASS



SEQUENCE



SILKWORM



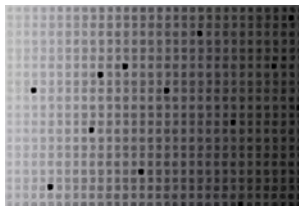
STRIPE



STACKS



THATCH



TRACE

TECHNICAL SUPPORT & PROJECT MANAGEMENT

Because each project is unique, our knowledgeable support team is ready to help. Our technical sales, engineering, sustainability, and project management professionals regularly assist our clients worldwide. Please contact us at 800.451.0410 or sales@forms-surfaces.com to discuss your project.

HOW TO SPECIFY

Design Guides are available for Stainless Steel & Fused Metal Elevator Door Skins to lead you through the specification process in a simple, checkbox format. The Design Guide captures all the information needed to generate a quote: dimensions, finishes, and other options. To get started, just give us a call or visit us at www.forms-surfaces.com.